



European Humanities University

Practical Guide for International Students



Table of contents

- Welcome to the European Humanities University!
- Studies at EHU:
 - Academic calendar
 - The campus
 - Moodle
 - LSP
- Student facilities
 - Student Service
 - Students' Union
 - Buddy Program and International Relations Office
 - Orientation Week
 - Language Courses
 - Library and Wireless Network
 - SportFacilities
 - LitPro
 - Mediahub
- Living in Vilnius
 - Currency and Banking
 - Public Transport
 - Shopping Malls
- Practical information
 - Visas
 - Health Care
 - Accommodation
 - MokiPay
- Things to do when you arrive
- Things to do before you leave
- Contact Information



EHU's campus is located in Vilnius, the capital of Lithuania and the historical capital of the Grand Duchy of Lithuania. Vilnius is a place of special significance not only for Lithuanians, but for other nationalities thanks to its location at the crossroads of Europe. Modern-day Vilnius is a vibrant European capital with a population of more than one-half million residents, and Lithuania is a member of the European Union as well as NATO and the United Nations.

In selecting EHU, you have a unique opportunity to dive into a multicultural community: despite the fact that a majority of the student body is from Belarus, there are also Russian and Lithuanian students. You will find a great variety of languages spoken on campus: Russian, Belarusian, English, German, French and Lithuanian.

Welcome to the European Humanities University!

Studying at EHU

Study Areas

Bachelor:

- International Law
- Belarusian Studies
- Media and Visual Design
- Theory and Practice of Contemporary Art
- Cultural Heritage
- Political Science and European Studies
- Media and Communication
- Sociology

Master:

- International Law and European Law
- Business Administration (Professional MBA)
- Historic and Cultural Heritage
- Cultural Studies
- Preservation and Interpretation of Cultural Heritage
- Existential Psychology
- Public Policy



CALENDAR OF ACADEMIC YEAR

October 1 – February 2 November, 1	Autumn semester Deadline for application forms (spring semester)
February 4 – February 15	Exams after the first semester
February 18 – March 3	Holidays
March 4 – June 15 June, 1	Spring semester Deadline for application forms (autumn semester)
July 1 – 13	Exams after the second semester

The campus

EHU's Vilnius campus is located in a building shared with Mykolas Romeris University. Surrounded by forests in the prestigious Antakalnis district, the campus is the ideal setting for reflection and study. Located at Valakupiu g. 5., you can get to the campus from the bus and railway stations by trolleybus № 2. From the airport, it is best to take bus № 3G and ride to the city center, then transfer to trolleybuses: №s 2, 14, or 4 will take you to the campus from the center. You may also take a taxi.

EHU's campus houses the University's computer labs, a library, the Academic Secretariat, Student Service, International Education and Career Advising Center, sports facilities, and a snack bar and cafeteria where students can buy reasonably priced lunches.



Moodle

Via the University's online platform, Moodle, you will have access to a list of all EHU courses. Please contact your student service for assistance in accessing Moodle (moodle.ehu.it).

Please click on "Login" and enter your user name and password. After registration, you will be guided to your chosen program. You will find courses listed under your semester. All courses are password protected: a new password is chosen for each semester and program.

Student facilities

You will easily find anything you need to satisfy or protect your interests at our University.

Student Service

EHU's Student Service coordinates services provided to students: these services promote students' creative initiatives, their public activities, national identity, social maturity and responsibility, and intellectual and cultural activities. The Student Service fosters cooperation and mutual assistance among various student organizations within the University, as well as interaction with University departments and other external organizations and people.

The Student Service helps students to

- organize extracurricular activities,
- organize conferences, seminars, and roundtables,
- publish leaflets, posters, and newspapers,
- conduct sociological research among students and alumni,
- participate in solving problems in the student community,

and

- promote alumni relations and activities.

In case you have a problem
E-mail: support.moodle@ehu.it
Google Talk | Jabber: support.moodle@ehu.it



Useful links:
[facebook.com→](https://www.facebook.com/ehustudentsunion)
[ehustudentsunion](https://ehustudentsunion.students.ehu.it)
students.ehu.it



Useful link:
www.campuseuropae.org

If you have an interesting idea, project, or initiative, the Student Service will help you to realize it! You can contact them by email or visit them at the Academic Building, Room 104.

Students' Union

EHU's Students' Union is the main representative body of the student community. It represents student interests at all levels, defends student rights, helps students resolve problems, supports student initiatives, and fosters good relations between students and University administration. Each high residence undergraduate class elects one representative to the Student Union.

The Student Union representative body is elected every academic year and operates according to its charter. It includes a president, a vice-president, and a press attaché, and delegates one person to EHU's Senate.

Buddy Program and International Relations Office

During your exchange period in Vilnius, you will have a buddy—another EHU student—who is available to help you in a variety of circumstances. As well as representatives of the International Relations Office, they will be with you during orientation week to acquaint you with Lithuanian culture, language, and specific national peculiarities, and will help make your adaptation period easy and smooth. You may contact them at any time or visit the International Relations Office in the City Center, Monday–Friday, 9:00a.m.—Noon, and 2:00p.m.–3:00 p.m. at Tauro g. 12, Room 202.

Campus Europae student representatives

EHU is a member of the European University Foundation Campus Europae and is represented in the organization by two EHU students: Anastasia Yeremenko (nastia.yeremenko@gmail.com) and Darja Sivakova (sivakova.darja.12@student.ehu.it). If you have any questions or problems concerning your exchange period, you may contact them by email or meet them at the University.

Orientation Week for international students

The program for Orientation Week includes activities, events, and field trips at the end of September to introduce international students to the University, its courses, and specific Lithuanian national characteristics. It is an amazing opportunity for exchange students to get acquainted with the Lithuanian educational system and to adapt to a new cultural atmosphere before the academic semester and educational process begins.

The program of activities of Orientation Week will be provided by the Head of The International Office and Erasmus Coordinator, Mr. Andrej Vankov.

Language courses

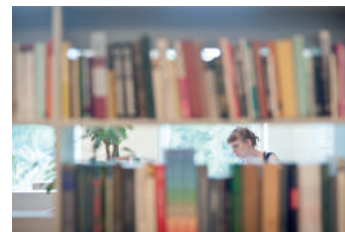
At the University, you also have an opportunity to learn foreign languages. Each year, the University proposes fees for certain student courses in English, Polish, German, French, Spanish/Italian, and Lithuanian: course fees vary depending on the number of students who want to attend the course.

For more information concerning the language courses and course fees, please contact Mrs. Olga Vasiliene, the head of the Language Department, by email at olga.vasilene@ehu.lt or visit her at the University Campus, Room 222.

Library

EHU's library presently holds printed and electronic books and periodicals in philosophy, sociology, political science, ethnography, history, cultural studies, arts criticism, journalism, and other humanities. In order to use library materials, a deposit of 50 Lt is required, which will be returned to you at the end of your exchange period. Fees may be paid in cash at the library.

EHU's library also provides printouts, scanning, and photocopying machines for your can use during library hours. In order to use the equipment, please buy a special card at the library (the price of this card depends on how many pages you want to print, but as a rule it is no more than 20 Lt, you can pay in cash) and library personnel will guide you through the process.



Library Hours:

Monday - Friday

9:00 a.m. to 7:00 p.m.

Saturday 9:15 to 2:00 p.m.

Sundays, holidays, and the last day of every month the library is closed.

Library Address:

Valakupių g. 5, 1st Floor, Room 114

LT-10101 Vilnius, Lithuania

Tel.: +370 5 274 0625



A free wireless network is available in the Academic Building for student use: no password is required. (Hotspot – EHUPUBLIC)

Sport facilities

A large sports hall on campus, which provides a wide variety of sport activities. An annual sports competition is held involving students and professors.

There is also a great selection of sports clubs in Vilnius that provide discounts for students.

Useful link:
www.litpro.lt



LitPro is a sociocultural project of European Humanities University. The project has been successfully carried out since 2007. One of its objectives is to teach the Lithuanian language to EHU students, lecturers and employees to acquaint them with Lithuanian history and culture.,

LitPro provides several different spheres of activity:

- Seminars, workshops, master classes
- Excursions around Lithuania
- Ethnographic research of Lithuania
- Lithuanian language courses and language-based summer schools

Each year, LitPro announces a call for educational and cultural projects proposals and provides financial and organizational support.

MEDIAHUB

Mediahub is a project that provides a great amount of professional tools for your use. Students can shoot videos while studying writing, editing, and directing. Teachers can enhance their skills and implement practical experience in the local classes. Mediahub will help you to develop sharp habits.

Useful link:
www.emediahub.blogspot.com



Living in Vilnius

Vilnius has always been a fascinating city. People of the various nationalities and cultures who have lived here have created a colorful mosaic. The capital of Lithuania is one of the most beautiful cities of the Old Continent, wherein the heritage of the past and achievements of the present—from science to culture—co-exist in harmony. The heart of the capital of Lithuania is the beautiful Vilnius Old Town, included in the UNESCO World Heritage list. Located on the shore of the Neris River, it is the oldest section of Vilnius.

Nowadays, Vilnius is an educational, cultural, and business center of the country. The residents of Vilnius are hospitable and cheerful people. You can experience this charm for yourself or even become a part of it.



Useful links:

www.swedbank.lt
www.seb.lt

Currency and bank account

The national currency is the Lithuanian Litas (LTL). The exchange rate between the Euro and the Litas is fixed at LT 3,4528 to EUR 1. The commission rate for currency exchange is 1–2 Litas. Please note that most banks are only open on weekdays until 5:00p.m. or 6:00p.m. Banks located in large shopping malls are open during weekends.

Opening a bank account is easy: visit any customer service outlet of Swedbank or any other bank and enter into a bank account agreement. When opening an account, the bank staff will ask you to furnish your passport with valid visa or a permit of residence in the Republic of Lithuania. You will also need to show your Lithuanian student identity card.

You may also use a bank card from your home-country bank since all large shopping malls and supermarkets accept Master Card or Visa; at the same time, you may withdraw money from ATM.

Public transport

The public transport system is highly developed in Vilnius, so you will be able to get to any part of the city by bus or trolley-bus. Buses start running at 5:30 a.m. and return to their parks around 11:00p.m. To use the public transport, you need a special city pass—“Vilniečio kortele”—which you can buy at a booking-office—„Lietuvos Spauda”—or at the information office—“Vilniečio kortele”—for 20 Lt for 30 days with your ISIC. You may add funds to your card at „Lietuvos Spauda.“ Visit the website www.stops.lt for the timetables of public transport and the route map with all stops to help plan your route.

There are a variety of taxi services in Vilnius. It is better to call a taxi than to hail one on the street. The taxi numbers are: 1446, 1441, 1886, and others. It will cost you roughly 2–2.50 LTL/km.

Vilnius International Airport (VNO) is very close to the city, only 10 km or about 10–15 minutes driving distance from the center. Once you have arrived, there are several possibilities to reach the city: Buses № 1, 2, 88 and 3G (express) will take you to the center (№ 1 - to the Railway station, № 2 goes to the City Center). It is best to take bus № 1 and ride to its final bus stop „Stotis” (the railway station). You can also take a taxi or shuttle to the train station, which costs 2,50 Lt.



Useful links:

www.vilniusticket.lt
www.stops.lt
www.vilnius-airport.lt
www.etaksi.lt

Shopping malls

Vilnius has abundant shopping centers. The most popular are Akropolis, Europa, Panorama, Ozas, and Gedimino 9. You can satisfy any need or whim of there. Akropolis is not only a shopping mall but is also an entertainment center with eight cinema screens, numerous restaurants, bowling, and a wonderful skating rink. Iki, Maxima, Rimi, and Norfa are supermarket chains that sell food and other basic commodities.

Practical information

Visas

Students from non-EU-countries must obtain a visa to enter Lithuania. These are available at Lithuanian embassies and consulates. EHU offers assistance to students in preparing documents to obtain a Lithuanian visa. High residence students must apply for a temporary residence permit or national visa “D” if they plan to stay in Lithuania longer than 90 days within a half-year period.

For more information, contact your program administrator or the Embassy of the Republic of Lithuania in your country.

EHU provides assistance for incoming international students regarding visa issues. You may contact Ms. Ona Valantiene at ona.valaitiene@ehu.lt for information.

Health care

In order to receive medical assistance, foreign students must provide a valid medical insurance card that they can buy in their home country or at the Lithuanian insurance agency. If you have caught a cold, an illness, or have any health problems, you should immediately go to the hospital to prevent a possible disease. It is better to prevent illness rather than spend time in treatment. The University has a contract with a private clinic, “Fama Bona”, which is also available for your health care issues.

National emergency phone number – 112

Useful links:

www.akropolis.lt
www.panorama.lt
www.ozas.lt
www.vilnius-life.com



Useful links of insurance companies:

www.ergo.lt
www.famabona.lt

“Fama Bona” clinica

www.famabona.lt
phone number:
(5) 2460726
address:
Ukmergės g.298A

For more information on student housing please contact:
students.accommodation@ehu.lt
or dainius.petkevicius@ehu.lt
Telephone:
+370 5 263 96 50
Weekdays
8:30a.m.–12:30p.m.;
1:30p.m.–5:00 p.m.

Useful links for locating housing:
www.alioreklama.lt
www.skelbiu.lt
www.edomus.lt
www.aruodas.lt

Accommodation

While studying at EHU you may either reside in a dormitory or rent an apartment or room.

From October 1, students can stay at EHU dormitories (Saulėtekis, Houses 31–51). Dormitories are located in the Antakalnis District, within walking distance of EHU's campus. You may walk or take the trolley-bus (Nº 10) or bus (Nº 5G) (two stops). Another dormitory is available on Didlaukio Street.

If you need to get to EHU dormitories from the airport, take bus Nº 1 and to get to the central station ("Stotis"). Then, to reach the Saulėtekis dormitories, take trolley-bus Nº 2, to Didlaukio and bus Nº 34.

Student dorms offer accommodations in a three bedroom flat with a balcony. A majority of the rooms have en suite bathrooms. There is a kitchen on each floor; Internet access is available in each room. Smoking is prohibited in dormitories.

You may instead rent a room or apartment in the city independently. It's best to start looking for an apartment no later than August. In this case, you should sign a contract with the owner of a flat for the entire period of your stay. If you face difficulties (e.g. the owner does not speak English), please contact your Buddy or the International Relations Office.

MokiPay

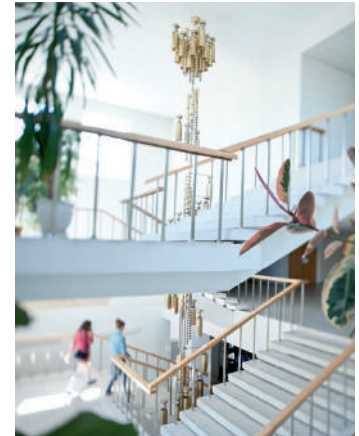
On campus, there is a new system of non-cash payments called MokiPay. Use of the MokiPay card not only gives you opportunity to profit on discounts at the campus snack bar and cafeteria, but also at the McDonald's, the Forum Cinemas, and other venues.

To obtain a MokiPay card, visit Dainius Petkevičius (dainius.petkevicius@ehu.lt), the student coordinator at the Administrative Office, Tauro g. 12, Room 202, and submit an application form. You will receive a confirmation letter by email. After paying a fee of 12 Lt, you will then pick up your card at the Administrative office.



Things to do when you arrive

1. Plan your studies and register for courses in Moodle
2. If you have a Study Period I Confirmation Form from your home university, have it signed at the International Relations Office
3. Register at the library and purchase a librarian card for photocopying and printout services
4. Check the due date of the rent of your student apartment (flat/dormitory/hotel) and visit the housing office to sign the contract (in case you live in the dormitory)
5. Buy a city pass and make some money drafts for public transport at a booking office: „Lietuvos Spauda“
6. Submit a questionnaire for incoming international students (a link will be provided to your email)



Things to do before you leave

1. Give advance notice to end your student housing lease (in case you rent a room in the dormitory)
2. If you need a letter of confirmation concerning the end of your exchange period, you may request one at the International Relations Office
3. Please make sure that you have provided a valid postal address to the International Relations Office for sending a Transcript of records to you after the end of your exchange period
4. Give feedback of your stay and exchange program
5. Return all library books and receive your returned deposit
6. Check to ensure that all your bills have been paid





Contact information

European Humanities University University Campus
(Shared with M. Romeris University) Valakupiu g. 5
Phone: +370 5 274 0622
Administrative Offices Tauro g. 12
Phone: +370 5 263 9650

Campus Europae Student Representatives:

Anastasia Yeremenko
Phone: +370 6 771 0707
nastia.yeremenko@gmail.com

Darjia Sivakova
Phone: +370 6 950 6949
sivakova.darjia.12@student.ehu.lt

Student Service Coordinator:

Tatsiana Babich
tatsiana.babich@ehu.lt
Visiting address: University Campus, Room 006

Housing Coordinator

Dainius Petkevicius
Phone: (+370 5) 262 02 21
dainius.petkevicius@ehu.lt

Head of the International Relations Office:

Mr. Andrej Vankov
Phone: +370 5 263 9652
andrej.vankov@ehu.lt
Facebook: EHUINTERNATIONALOFFICE
Visiting address: Academic Campus , Valakupiu str. 5, Room 101

ERASMUS Department Coordinators

Department of Law
Prof. Dr.Oleg Bresky
oleg.bresky@ehu.lt

Department of Media
Prof. Dr. Almira Ousmanova
almira.ousmanova@ehu.lt

Department of History
Prof. Justina Poskiene
justina.poskiene@ehu.lt

Center for Business Administration
Pavel Malukowitch
pavel.malukowitch@ehu.lt

Political Science
Prof. Dr. Aliksandr Kalbaska
aliksandr.kalbaska@ehu.lt

A short glossary

EN	LT	RU
Greetings: Hi! Good morning! Good evening!	sveiki, labas! labas rytas! labas vakaras!	привет! доброе утро! добрый вечер!
Parting: Good bye! See you!	sudie, viso gero! iki pasimatymo!	до свидания! до встречи!
Thanking: Thank you!	ačiū!	спасибо!
How are you? I'm lost, please help me	kaip sekasi? pasiklydau, prašau man padėti	как дела? я потерялся, помогите мне, пожалуйста



VILNIUS 1:2000

- Administrative Office, Tauro g. 12
- EHU dormitories, Saulėtekis 31-51
- University Campus, Valakupių g. 5
- EHU dormitories, Didlaukio g. 59



EHU European Humanities University



Erasmus+